



SquidNet

Network Render Manager

LINUX Installation Guide

Version 1.1
January 26, 2010

Table of Contents

ABOUT THIS DOCUMENT:	2
1 INSTRUCTIONS	1
1.1 REQUIREMENTS	1
1.2 FIREWALL.....	1
1.3 HOSTNAME LOOKUP.....	1
1.4 SMC CONSOLE	2
1.5 INSTALL	2
1.6 UNINSTALL.....	3
2 FREQUENTLY ASKED QUESTIONS	3
2.1 AFTER THE INSTALLATION COMPLETES, I GET THE FOLLOWING ERROR. WHAT'S WRONG?	4
2.2 IS THERE A SANITY CHECK THAT CAN BE DONE AFTER THE INSTALLATION?.....	4

SquidNet Network Distribution Processor – LINUX Installation Guide

About this document:

This manual will describe the SquidNet installation on a Linux Operating System. It's assumed that the reader is familiar with basic operating system, administrative and networking terms.

For any suggestions or comments, feel free to contact us; contact information can be found in the Help menu in the SMC console and on our website at <http://www.squidnetsoftware.com>.

1 Instructions

1.1 Requirements

For Linux, SquidNet supports a majority of the more popular 32/64 bit distributions.

Please make sure that your system is up to date with the latest application packages and security updates before starting this procedure.

1.2 Firewall

***** IMPORTANT *****

The squidnetd daemon uses the following network ports:

- TCP 17394
- UDP 17395
- UDP 17396

Please make sure you open these ports up in your firewall ("**Other Ports**") and also make sure that the local interface (eth*) is marked as trusted in the **Trusted Interfaces** page. Not doing so will cause tipnode detection issues.

1.3 Hostname lookup

***** IMPORTANT *****

Please make sure that your Linux system has the proper hostname name setup so that when a hostname lookup is made the correct network IP address is returned.

For Debian based distributions:

- Add you hostname to “**/etc/hostname**”
- Execute “**/etc/init.d/hostname.sh start**” (or reboot)

For RedHat based distributions:

- Edit “**/etc/sysconfig/network**”
- Execute “**/etc/rc.d/rc.sysinit**” (or reboot).

Alternatively, but not recommended, you can edit your **/etc/hosts** file to include the hostname and IP address. If the hostname of your node is not present in **/etc/hosts**, SquidNet will use the IP address assigned to network interface “eth0”.

```
[root@REDHATSERVER00 ~]# cat /etc/hosts
# Do not remove the following line, or various programs
# that require network functionality will fail.
127.0.0.1          localhost.localdomain localhost
::1              localhost6.localdomain6 localhost6
10.0.0.21         REDHATSERVER00
[root@REDHATSERVER00 ~]# vi /etc/hosts
[root@REDHATSERVER00 ~]#
```

Tipnode name setup in **/etc/hosts** file.

SquidNet Network Distribution Processor – LINUX Installation Guide

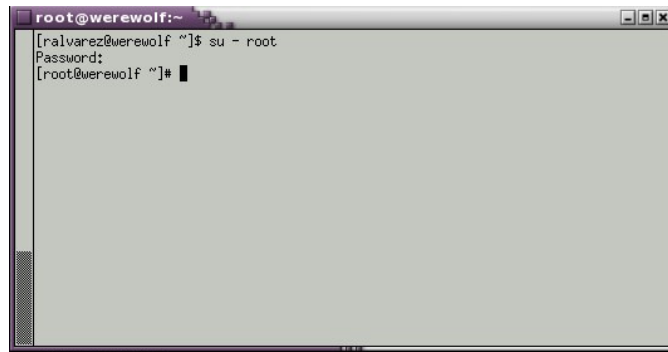
1.4 SMC Console

Because the SMC console only runs on WINDOWS, you'll need to install the WINDOWS version of SquidNet on a WINDOWS host. There's no equivalent GUI that runs on Linux.

1.5 Install

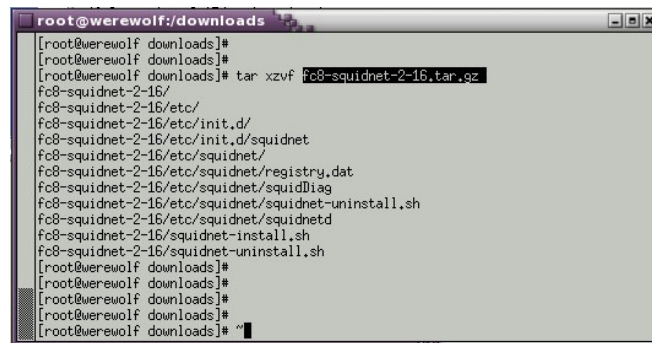
The SquidNet installation is done with a simple tarball. You must be logged into a "root" account to execute the following procedures:

- Make sure you have the latest version of the Linux SquidNet installer available. Always check the website for the latest updates.
- Open up a terminal and "su" into a root account.



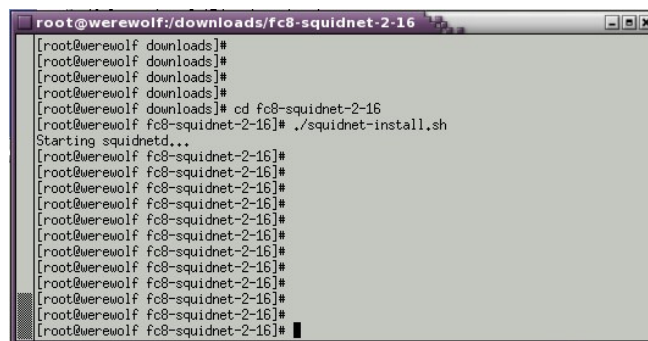
```
root@werewolf:~  
[ralvarez@werewolf ~]$ su - root  
Password:  
[root@werewolf ~]#
```

- Assuming your install tarball is "fc8-squidnet-2-16.tar.gz" untar the file.



```
root@werewolf:~/downloads  
[root@werewolf downloads]#  
[root@werewolf downloads]#  
[root@werewolf downloads]# tar xzvf fc8-squidnet-2-16.tar.gz  
fc8-squidnet-2-16/  
fc8-squidnet-2-16/etc/  
fc8-squidnet-2-16/etc/init.d/  
fc8-squidnet-2-16/etc/init.d/squidnet  
fc8-squidnet-2-16/etc/squidnet/  
fc8-squidnet-2-16/etc/squidnet/registry.dat  
fc8-squidnet-2-16/etc/squidnet/squiddiag  
fc8-squidnet-2-16/etc/squidnet/squidnet-uninstall.sh  
fc8-squidnet-2-16/etc/squidnet/squidnetd  
fc8-squidnet-2-16/squidnet-install.sh  
fc8-squidnet-2-16/squidnet-uninstall.sh  
[root@werewolf downloads]#  
[root@werewolf downloads]#  
[root@werewolf downloads]#  
[root@werewolf downloads]#  
[root@werewolf downloads]#
```

- "cd" into untarred directory and run installer script.



```
root@werewolf:~/downloads/fc8-squidnet-2-16  
[root@werewolf downloads]#  
[root@werewolf downloads]#  
[root@werewolf downloads]#  
[root@werewolf downloads]#  
[root@werewolf downloads]# cd fc8-squidnet-2-16  
[root@werewolf downloads]# ./squidnet-install.sh  
Starting squidnetd...  
[root@werewolf fc8-squidnet-2-16]#  
[root@werewolf fc8-squidnet-2-16]#  
[root@werewolf fc8-squidnet-2-16]#  
[root@werewolf fc8-squidnet-2-16]#  
[root@werewolf fc8-squidnet-2-16]#  
[root@werewolf fc8-squidnet-2-16]#  
[root@werewolf fc8-squidnet-2-16]#  
[root@werewolf fc8-squidnet-2-16]#  
[root@werewolf fc8-squidnet-2-16]#  
[root@werewolf fc8-squidnet-2-16]#  
[root@werewolf fc8-squidnet-2-16]#  
[root@werewolf fc8-squidnet-2-16]#
```

- At this point, you should have a squidnetd daemon running.

SquidNet Network Distribution Processor – LINUX Installation Guide

```
root@werewolf:/downloads/fc8-squidnet-2-16
[root@werewolf fc8-squidnet-2-16]#
[root@werewolf fc8-squidnet-2-16]#
[root@werewolf fc8-squidnet-2-16]#
[root@werewolf fc8-squidnet-2-16]#
[root@werewolf fc8-squidnet-2-16]#
[root@werewolf fc8-squidnet-2-16]# ps -ef | grep squidnetd
root      27374      1  0 22:14 pts/2    00:00:00 /etc/squidnet/squidnetd
root      27562 27123  0 22:15 pts/2    00:00:00 grep squidnetd
[root@werewolf fc8-squidnet-2-16]#
[root@werewolf fc8-squidnet-2-16]#
[root@werewolf fc8-squidnet-2-16]#
[root@werewolf fc8-squidnet-2-16]#
[root@werewolf fc8-squidnet-2-16]#
[root@werewolf fc8-squidnet-2-16]#
[root@werewolf fc8-squidnet-2-16]#
[root@werewolf fc8-squidnet-2-16]#
[root@werewolf fc8-squidnet-2-16]#
[root@werewolf fc8-squidnet-2-16]#
[root@werewolf fc8-squidnet-2-16]#
[root@werewolf fc8-squidnet-2-16]#
[root@werewolf fc8-squidnet-2-16]#
```

- You may start, stop or restart the SquidNet daemon using the following commands (as root):
 - `/etc/init.d/squidnet start`
 - `/etc/init.d/squidnet stop`
 - `/etc/init.d/squidnet restart`

```
root@werewolf:/downloads/fc8-squidnet-2-16
[root@werewolf fc8-squidnet-2-16]#
[root@werewolf fc8-squidnet-2-16]#
[root@werewolf fc8-squidnet-2-16]#
[root@werewolf fc8-squidnet-2-16]#
[root@werewolf fc8-squidnet-2-16]#
[root@werewolf fc8-squidnet-2-16]# /etc/init.d/squidnet stop
Stopping squidnetd: [ OK ]
[root@werewolf fc8-squidnet-2-16]# /etc/init.d/squidnet start
Starting squidnetd: [ OK ]
[root@werewolf fc8-squidnet-2-16]# /etc/init.d/squidnet restart
Stopping squidnetd: [ OK ]
Starting squidnetd: [ OK ]
[root@werewolf fc8-squidnet-2-16]#
[root@werewolf fc8-squidnet-2-16]#
[root@werewolf fc8-squidnet-2-16]#
[root@werewolf fc8-squidnet-2-16]#
[root@werewolf fc8-squidnet-2-16]#
```

1.6 Uninstall

To uninstall SquidNet, do the following:

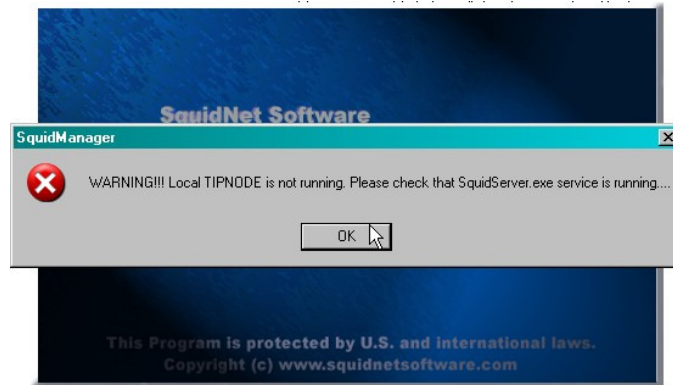
- “cd” to SquidNet installation directory (`/etc/squidnet`) and execute uninstall script (`squidnet-uninstall.sh`).

```
root@werewolf:/etc/squidnet
[root@werewolf /]#
[root@werewolf /]#
[root@werewolf /]#
[root@werewolf /]#
[root@werewolf /]# cd /etc/squidnet/
[root@werewolf squidnet]# ./squidnet-uninstall.sh
[root@werewolf squidnet]#
[root@werewolf squidnet]#
[root@werewolf squidnet]#
[root@werewolf squidnet]#
[root@werewolf squidnet]#
[root@werewolf squidnet]#
[root@werewolf squidnet]#
[root@werewolf squidnet]#
[root@werewolf squidnet]#
[root@werewolf squidnet]#
[root@werewolf squidnet]#
[root@werewolf squidnet]#
[root@werewolf squidnet]#
[root@werewolf squidnet]#
[root@werewolf squidnet]#
[root@werewolf squidnet]#
[root@werewolf squidnet]#
```

2 Frequently Asked Questions

2.1 After the installation completes, I get the following error. What's wrong?

Use the Services manager to start the “SquidNet Distribution Manager” service or reboot your computer. After this you should see your local WINDOWS tipnode as well as any Linux-based tipnodes.



2.2 Is there a sanity check that can be done after the installation?

Yes, you can try the following for a quick installation verification:

1. Using the SMC condole, make sure all your hosts appear in the Tipnode window.
2. To verify your network setup, try submitting a job using the SquidNet Verification template. It will send a dummy job to all your tipnode hosts.
3. Make sure that the job completes successfully.
4. If the Diagnostic job errors out, select the job in the job window, then select the errored out jobslice, right-click and open the log.
5. If the SquidNet diagnostic job succeeds, your network appears to be setup correctly.